

JAC
MOTORS

E30X

100 % ELECTRIC



CONTACT US

PHONE: +599 9 843 5055 CURACAO
+599 717 5055 BONAIRE
SOCIAL: @AMPMOTORSCURACAO
WEBSITE: WWW.AMP.CW



AMP UP YOUR DRIVE: ELECTRIC POWER, VIBRANT FUN

Version	Standard Air405	Flagship Pro+505	Power & Handling	Air405	Pro+505
Basic information			EP	●	●
Length*Width*Height(mm)	4025*1770*1560	4025*1770*1560	Auto Hold	●	●
Wheelbase(mm)	2620	2620	Electronic power steering system(EPS)	●	●
Curb weight(kg)	1365	1445	Shift mode	Paddle shift	Paddle shift
GVW(Kg)	1740	1820	Front brake system	Ventilation disc	Ventilation disc
Seat numbers	5	5	Rear brake system	Disc	Disc
Autonomy(CLTC,km)	405	505	Front Macpherson suspension	Macpherson suspension	Macpherson suspension
Radius of turning (m)	4.95	4.95	Rear torsion beam suspension	Torsion beam suspension	Torsion beam suspension
Rim material	Aluminium alloy	Aluminium alloy			
16" aluminum rim 205/55R16	●	-			
17" aluminum rim 205/55R17	-	●			
Capacity of trunk	250	250			
Spare tire	●	●			



Exterior configurations	Air405	Pro+505
Bitone color body	-	○
1.45m ² Low-E Panoramic sunroof(cannot be opened)	-	● (Manual shade is optional)
Hidden door handle (electric swing open)	●	●
"Angel Eyes" LED automatic headlights	●	●
Angel smart wisdom interactive lamp	-	●
LED Daytime running lamps	●	●
LED combined tail lamps	●	●
Rear fog lamps	●	●
4-door one key lift&anti pitch	●	●
Remote auto window lift after lock	●	●
Rear view mirrors power adjust	●	●
Rear view mirror electric heating	●	●
Rear view mirror power fold	-	●
Rear view mirror power fold(auto fold after lock)	-	●
Front boneless wiper	●	●
Front boneless automatic wiper	●	●
Rear Boneless wiper	●	●
Rear privacy glass	●	-
Rear windshield defrost function	●	●



Interior configurations	Air405	Pro+505
Interior color	Black	Black /Cocoa brown
Remote key	2	2 (Bluetooth remote start function)
Keyless entry(Driver door)		●
Mobile Bluetooth key	-	-
Senseless start	●	●
Leather multi-function steering wheel	●	●
Steering wheel telescopic adjustment	●	●
Eco-friendly skin friendly imitation leather seat	●	●
Driver seat 6-way manual adjustment	●	-
Driver seat 6-way electric adjustment	-	●
Driver seat heating	-	●
Driver seat ventilation	-	●
Driver seat welcome	-	●
Driver seat memory	-	●
Co-driver 4-way manual adjustment	●	●
Rear seats central headrest	●	●
Second row seats way of folding	4/6	4/6
Cosmetic mirror +LED light	●	-
Large size beauty mirror +LED ring fill light	-	●
Manual anti-glare interior rearview mirror	●	●
Front ceiling lamp (LED)	●	●
On-board 12V power supply (front row)	●	●
Front USB ports	●	●
Rear Type C charging port	●	●
64 colors Ambient lamp	-	●



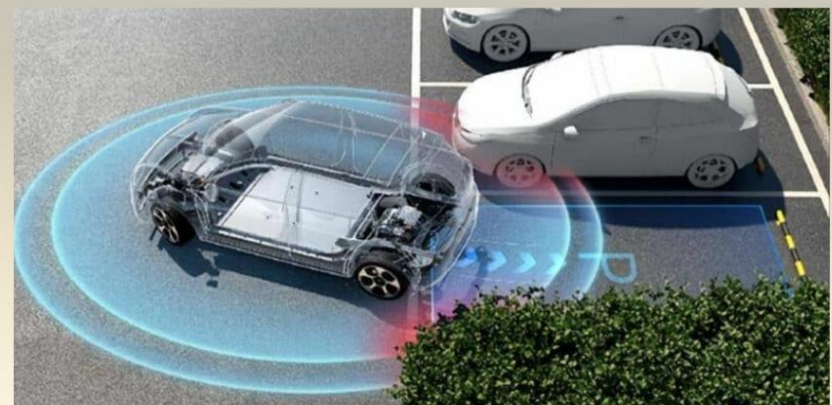
Smart A/C system	Air405	Pro+505
Type	● Automatic heat pump	● Automatic heat pump
Rear air outlet	●	●
Center armrest inner storage box air outlet	●	●
PM2.5 and pollen filtration system	●	●

Intelligence&Network	Air405	Pro+505
LCD cluster(6.2 inch)	●	●
MP5 screen	●12.8inch	●15.6inch (DAB)
CARPLAY+ANDRIOD AUTO (Wireless)	●	●
MP5 memory	8G	8G
MP5 storage	64G	64G
Wireless charging	-	●
Bluetooth phone	●	●
Speakers	● 4	● 8



Safety configurations	Air405	Pro+505
Driver airbag	●	●
Co-Driver airbag	●	●
Front side airbag	●	●
Front and rear head airbags	●	●
Front force-limiting seat belt	●	●
Rear three-point ordinary seat belt	●	●
Rear outboard pre-tensioned force-limiting safety belt	●	●
Driver's safety belt unfastened reminder	●	●
Passenger seat belt unfastened reminder	●	●
Electronic Stability Control (ESC)	●	●
Anti-lock Brake System (ABS)	●	●
Electronic Brake force Distribution(EBD)	●	●
Traction Control Sytem(TCS)	●	●
Dynamic-assisted braking system (CDP)	●	●
Brake assist system (HBA)	●	●
Tire Pressure Monitoring System (TPMS)	●	●
ISOFIX	●	●
Reverse image	●	-
360° panoromic images	-	●
540° transparent chassis	-	●
Reverse radars	●	●
CCS	●	●

Intelligent assisted driving	Air405	Pro+505
Blind spot detection(BSD)	-	●
Door open warning(DOW)	-	●
Cross traffic warning(CTA)	-	●
Lane departure warning(LDW)	-	●
Lane cross warning(LCW)	-	●
Front collision warning(FCW)	-	●
Auto headlamp switch(HMA)	-	●
Lane keep assistance(LKA)	-	●
Adapative cruise control(ACC)	-	●
Auto emergency brake(with pedestrain recognition) (AEB)	-	●
Intelligent cruise assistance(TJA/ICA)	-	●
Rear side pretension limited force belt	●	●
Rear seat belt unfastened reminder	-	●



Powertrain Performance	Air405	Pro+505
Motor type	Permanent magnet synchronization	Permanent magnet synchronization
Motor peak power(kW)	70	100
Motor max torque(Nm)	135	175
Top speed(km/h)	150	150
Max gradeability (%)	≥25%	≥30%
Battery Type	Cellular battery	Cellular battery
Type of cooling	liquid cooling	liquid cooling
Battery total power capacity (kWh)	41	51.5
AC Charging time (SOC 0%-100%)(h)	7.5 (6.6kW)	9 (6.6kW)
DC Charging time (SOC30%-80%)(Min)	30	30
Charging standard	GB	Type 2
V2L	-	●

